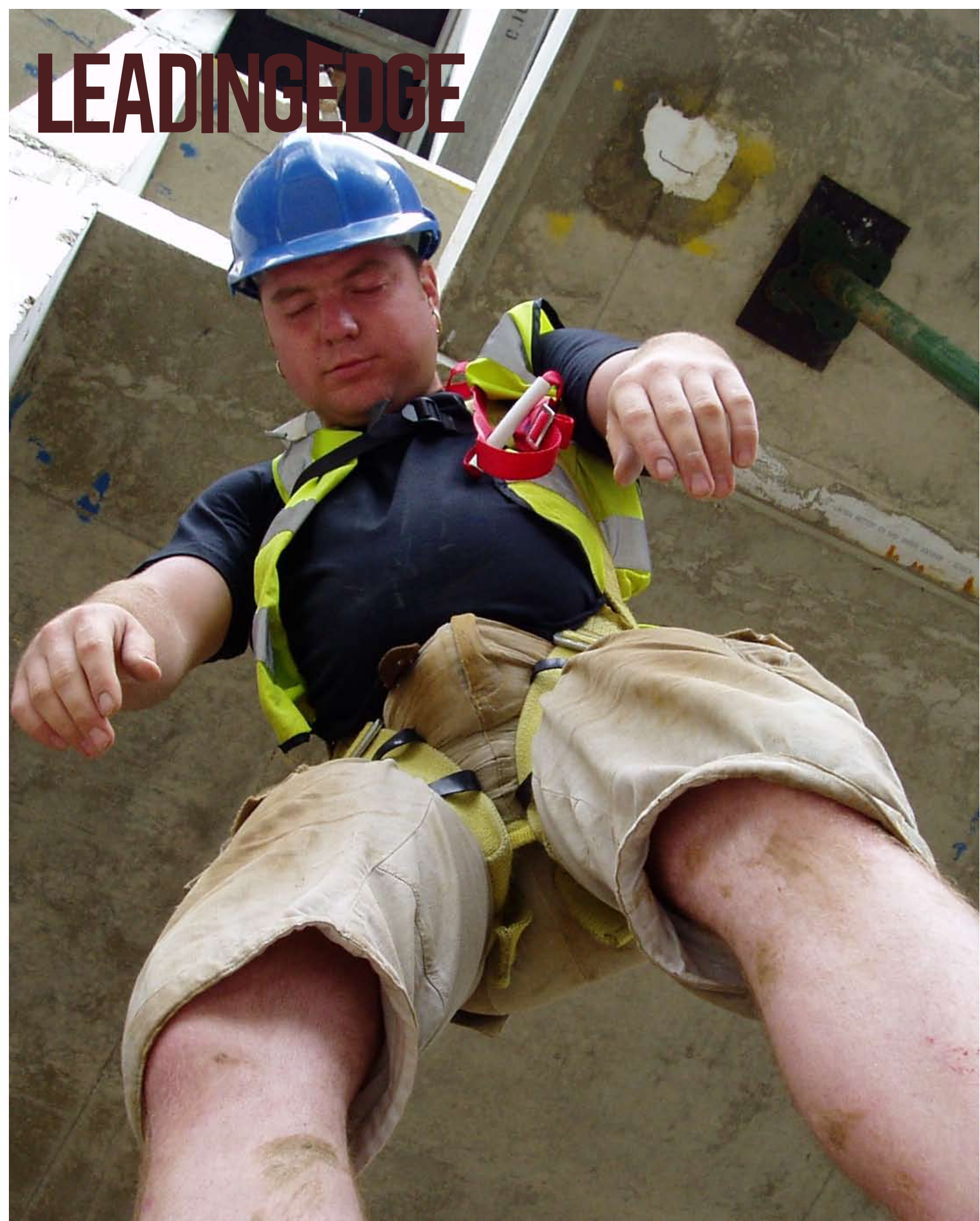


# LEADINGEDGE



Winch Casualty Raising & Lowering Rescue Training

## Rescue Winch Casualty Raising & Lowering | ½ Day



### Rescue Winch Casualty Raising & Lowering

#### Who Is This Rescue Course For?

The winch rescue course is aimed at anyone whose job requires them to work at height, and which potentially puts them and co-workers at risk of falling, and are therefore required to be competent to effect rescue of a co-worker which may require both raising or lowering as part of this process.

#### Is The Winch System Right For You?

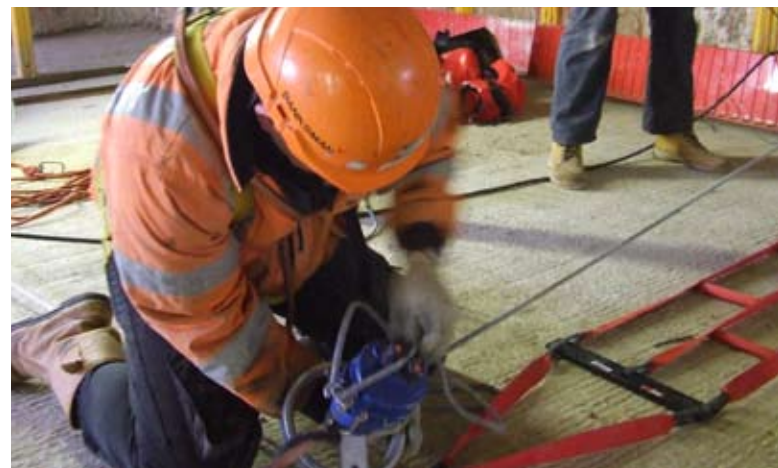
The winch system allows the safe recovery of a fallen unconscious/ conscious person through raising or lowering of the casualty, this provides multiple options based on where the fall occurred and the available access and workplace restrictions.

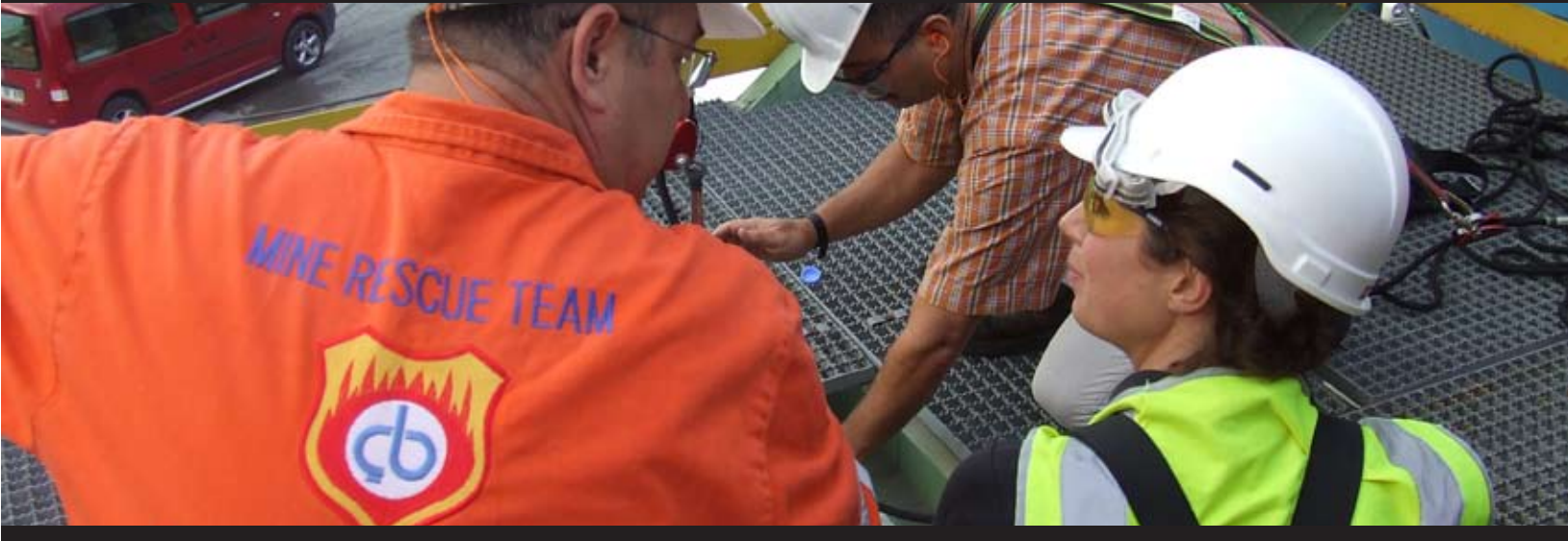
The winch only requires one person to operate in any mode to effect a rescue. The system is simple to use and fast to set up and operate.

#### What Are The Objectives Of This Rescue Course

This course is very hands on, we don't just talk, we do. What does that mean? We actually rescue people on the course, by physically going through the process, at height over the edge of the fall area recovering people. The delegates all have to complete real rescues of each other (we also provide a rescue dummy if preferred).

This is done in a very safe controlled environment with all the necessary back-up systems for maximum safety and reassurance. But when it comes down to it, when we are not with you, you need to be competent to carry out these rescue procedures, and you can only really achieve this through live practice in your work. But be reassured we don't leave until we feel happy your happy, competent and safe.





### Learning Outcome

Upon successful completion of the course, we guarantee delegates will be able to competently and safely handle the rescue of a conscious casualty using the rescue step (personal relief system) and the rescue ladder system, with the main focus being able to facilitate the recovery of an unconscious casualty by either raising to the working floor or lowering to a lower floor or ground level using the winch system.

### We Train At Your Location

On-site training is the key to reducing disruption and minimising lost time for employers. It also allows Leading Edge to apply specific training and advice relative to rescue should it be required at your actual site.

### Working At Height Winch Rescue Course Introduction

"It is essential that people who work at height together with their co-workers and are at risk of falling have the capacity to perform rescue for their co-workers quickly, whilst being safe, minimising the effects of suspension trauma in the critical time it takes to recover someone."

We understand the importance of keeping rescue simple, our approach is about keeping things clear, intuitive and at a basic skill level of operation and therefore easily preformed by anyone attending this half day course.

The course focuses on using the winch (unconscious casualty raising and lowering system) but also covers the ladder and rescue step conscious causality systems to offer a complete cover all basis's rescue package.

### Benefits Of Using The Winch System

The winch system allows the safe recovery of a fallen unconscious/conscious person through raising or lowering of the casualty, this provides multiple options based on where the fall occurred and the available access and workplace restrictions.

Raising allows the recovery of the causality back up to the level where they were working, which is an advantage on applications where lower levels are obstructed, making lowering impractical.

The lowering facility is the mechanically easiest method in just descending the casualty to a lower level or ground. This enablese medics to be able to stabilise and extract the casualty quickly without having to carry them down though a structure or similar and all associated hazards and obstacles this presents. The winch only requires one person to operate in any mode to effect rescue using the system.

### System Benefits:

- Versatile for any application
- Vertical anchorage suitable (Above casualty)
- Horizontal anchorage where no suitable above head anchorage is available
- Built-in adjustable anchorage system can independently accommodate anchorage points up to 10m away from system, making it totally flexible
- Raising capability (Foldout balanced winding handle)
- Lowering and parking capability (Assisted braking belay system)
- Requires only one person to operate and effect rescue in any mode
- Robust design with cast alloy housing
- Emergency escape - enables the evacuation from elevated position to the ground at a controlled automatic rate of descent
- Stretcher handling - recovery of a casualty incorporating a stretcher loaded vertically or horizontally combined with the winch

## Rescue Winch Casualty Raising & Lowering | ½ Day

### Winch Rescue Course Content

Our course follows a specially developed logical process, giving weight only to the things that are directly relevant and specific to the actual working environment and scope of activity, available access and equipment suitability.

Delegates will be able to handle the rescue of both conscious and unconscious casualties within a very short time frame and demonstrate appropriate hazard awareness for both themselves and the casualty necessary for a fast and safe rescue operation.

### Theory

Phase 1 of the course begins in the classroom, covering the theoretical issues around the subject as a whole, from basic legal outline and duties, through to equipment selection, recovery techniques and information on the signs, symptoms and effects of suspension trauma.

Delegates will also learn the importance of after-care for the situation, so that the casualty receives the correct care whilst waiting for emergency services to arrive on scene.

### Practical

The strength of the course lies in the practical element. We actually simulate rescue operations where they are working so the training is directly relevant to their working environment, making it specific, focused and effective.

Delegates will be engaged using both conscious and unconscious casualties systems, selecting the appropriate method based on working as very small group, as an individual rescuer, or as part of a bigger team, and will then be given the opportunity carry out live practice using these different systems in a safe and controlled environment under the supervision of the instructor.

We incorporate rescue techniques that reinforced skills and operations through memorable chants. Prevent skill fade and confusion caused by anxiety given the potentially stressful situation.



## Rescue Winch Casualty Raising & Lowering | ½ Day

### What Makes This Rescue Course Different?

Our philosophy to rescue training and equipment is "keep it simple!" That sounds easy, but for us it was a real challenge. You see all our competitors go about it differently, focusing on the most technically efficient path, which typically involves much greater levels of operator competence, training and retraining to handle the complexity and rigging of equipment.

But we don't agree with this! For example how we handle conscious casualty in keeping with our philosophy, we developed the first height safety specific rescue ladder, why? What's simpler than a ladder, if the casualty is conscious and able, throw him a ladder and he can self recover himself... Instead of breaking out complicated rigging systems only to effect the same result but in a much longer time and greatly increasing further personnel to edge exposure.

We took the same approach of keeping it simple, in our other systems designed to rescue unconscious casualties. Again this is the principle in all our designs, as you know all the best designs are the simplest. Following this path in the development of this rescue course, focusing only on what important to you, and what matters most, knowing what to do and how to do it, specifically around the nature of exposure, risk and issues to do with the equipment being used, making it tailored to you and your job and workplace.

### **This Course Is Very Hands On, We Don't Just Talk, We Do.**

What does that mean? We actually rescue people on the course, by physically going through the process, at height over the fall location or edge of a building and actually recovering people. The delegates all have to complete real rescues of each other (we also provide a rescue dummy if preferred). This is done in a very safe controlled environment with all the necessary back-up systems for maximum safety and reassurance.

But when it comes down to it, when we are not with you, you need to be competent to carry out these rescue procedures, and you can only really achieve this through live practice in your workplace.

But be reassured we don't leave until we feel happy your happy, competent and safe.

### Why You Should Feel Happy To Use Us

We currently have more than 5,000 plus people every single year complete our range of height safety training courses, to not only gain the certification they need but also the competence to work safely.

### Winch Rescue Learning Outcomes

Upon successful completion of the course, we guarantee delegates will be able to competently, confidently and safely handle the rescue operation of both conscious and unconscious scenario for their co-workers.

### After The Course Delegates Will Be Able To

Effect safe rescue within a suitably safe time frame before serious injuries are sustained as a result of suspension trauma, to ensure workers can easily undertake a successful rescue operation while minimising trauma damage.

Candidates will also have an acute awareness of the dangers and risks involved in a casualty rescue for both the casualty and themselves.

### Your Ticket To Height Safety Rescue

On successful completion of the course and examination, candidates will be issued with a Leading Edge Photo ID card and certification as proof of their accomplishment, safety awareness and level of competence.

Plus all our customers are eligible to the free 'Height Safety Service Pack' service.



### Course Introduction

- Outlining the theoretical and practical training the course will cover
- Risk assessment safety briefing
- Medical assessment documentation
- Rescue awareness

### Basic Specific Legal

- Outline / requirements & duties
- Height safety statistics, awareness and reality

### Group Exercise

Designed to establish confidence levels with workshop activities

### Suspension Trauma

- Toxic shock, re-flow syndrome and orthostatic intolerance introduction
- What is it and how to recognise the symptoms
- How to handle and minimise the effects
- Casualty treatment, after-care guidelines and information

### Saving Lives

*Planning for successful rescue operations to include:*

- Equipment application vs. suitability and use
- Raising the alarm and emergency procedures
- Rescue team responsibilities, procedures and information
- Self-recovery system(s) for conscious casualties
- Unconscious system(s) for casualty recovery
- Personal relief systems

### Inspection & Care Of Rescue Kit

How to care for and maintain your rescue kit with an inspection regime and planning

### Proactive Awareness

**Hazard awareness to spot potential risks & dangers**

### Practical

#### Group Practicale Exercise

- Informal risk assessment
- General safety briefing to ensure a safe rescue practical session
- Establish a safe working area and necessary safety precautions are in place

#### Safety Systems Set-Up

- Correct set-up of safety equipment for working at height and rescue
- Safety provision to cover limited open edge exposure and strict supervision in a controlled environment

Participation live exercise  
(we also provide a rescue dummy if preferred)

A group practical exercise whereby workers engage in the live rescue of each other.

Designed to establish competency, confidence and determine equipment familiarisation and to strengthen any delegates areas of weakness.

Delegates also receive in depth training how to set up the winch, anchorage selection and suitability, winch deployment and operation for specific rescue operations.

This section of the course will include the following exercises:

- **The Ladder** - conscious casualty self recovery system
- Effective setup, deploying and ladder climbing techniques
- **The Rescue Step** - Personal relief systems >
- Donning, deploying and relief techniques
- **The Winch Rescue** - casualty raising and lowering system
- Horizontal anchorage scenario (back from the fall area):
- Setup and effect recover of casualty through:
  - Raising capability
  - Parking
  - Lowering
  - Casualty safe recover handling technique
- **Vertical Anchorage Scenario** (above casualty):
- Setup and effect recover of casualty through:
  - Raising capability
  - Parking
  - Lowering
  - Casualty safe recover handling technique

#### Live Instructor Guidance

A tour around the work place for the instructor to review potential and existing site issues, candidate feedback on potential hazards and all relevant areas of concern with regard to rescue operations.

#### Review Of Attained Competence

The course ends after a practical and oral test

## Rescue Winch Casualty Raising & Lowering | 1/2 Day



### Pricing Information

Location: Client's Site

Our training is job specific and so in order to provide the most effective training we deliver courses on-site. We provide direct training at your location both nationwide and internationally. So wherever you are, we can deliver the training courses you need.

Duration - 1 Day (8.30am to 5.00pm)

Our courses last a full day to ensure candidates receive excellent training and practical assessments. Because our training is held on-site it will minimise disruption and traveling times so you can maintain your workplace schedule.

No. Of People	Onsite*
Up To - 10	Persons Course £995 + (VAT)

\*Course fees include the travel costs for England and Wales only; for all courses outside of this area there will be additional travel costs as appropriate.

Telephone: 01329 550 121 | Fax: 01329 550 470



## Leading Edge Safety Group Booking Form

Fax This Form Back On: 01329 550 470

### Terms & Conditions

- Provisional dates can only be reserved for 24hrs before booking is lost
- Booking confirmation is only accepted on completion and return of this form.
- Course cancellation made at or under 5 working days notice will be invoiced at full course cost.
- Photo ID Licences and Certificates will be released on receipt of payment
- By signing this form you agree to these terms and conditions.

Client Details	
Booking Contact:	
Position:	
Company:	
Address:	
Email:	
Tel:	
Fax:	

Training Location Details	
Site Name / Project:	
Site Address:	
Site Contact	
Site Tel No:	

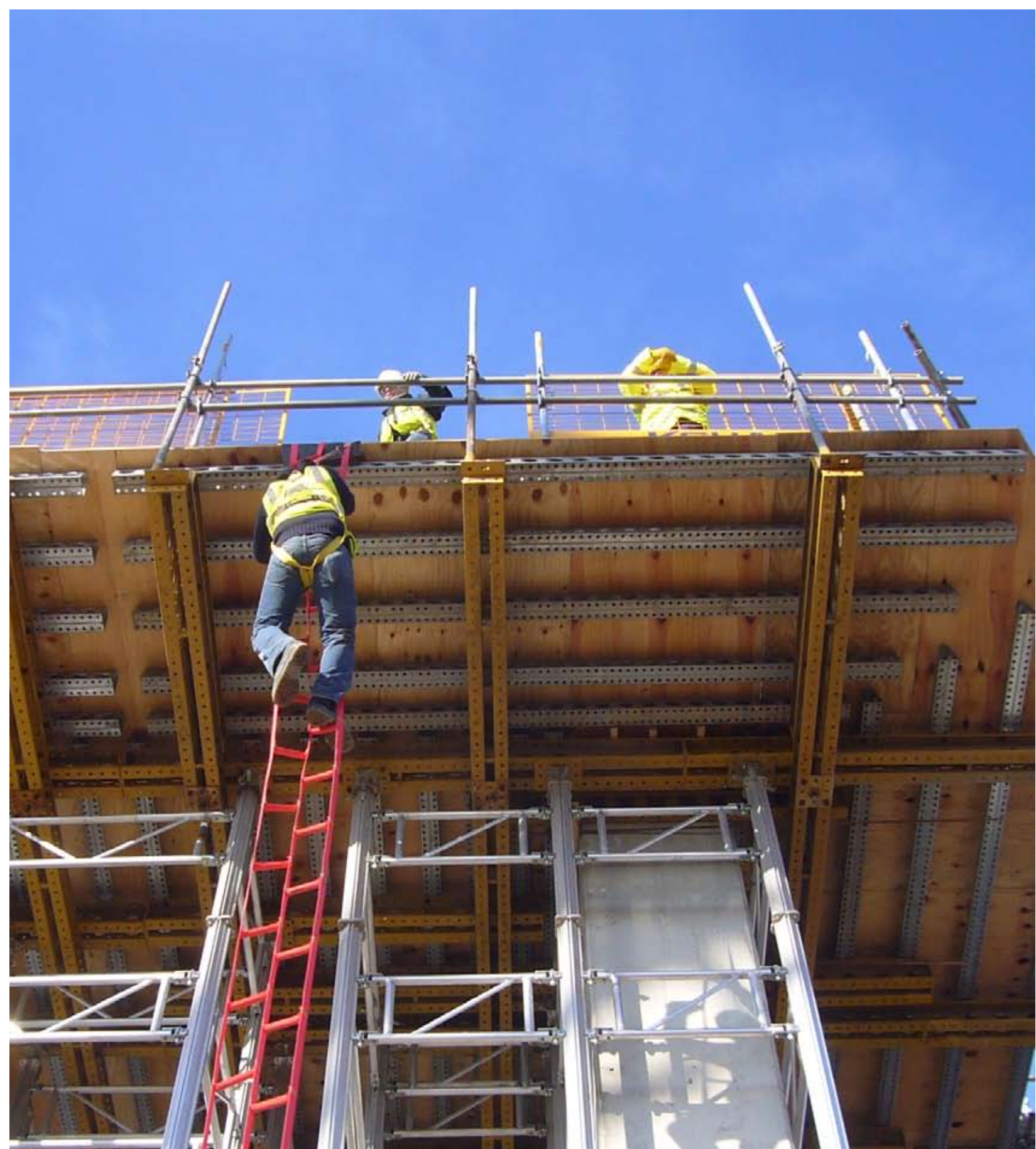
<b>Course Details</b>	
Training Course:	
Training Date:	
No Of People Attending Course	
Course Fee:	
Course Start Time:	

<b>Order Confirmation</b>	
Order No:	
Print Name:	
Signature:	
Date:	
	(by signing this document you agree to the Terms & Conditions Listed Above)

<b>Cards &amp; Certificates</b>	
Please give details of where you would like cards and certificates sent to:	
Postal Address:	
Contact Name:	

### **Course Location Requirements**

- Classroom courses containing a theory element will require a room with a suitable number of tables, chairs and 240v power supply
- Courses containing a practical section will require a clear area ideally where the candidates are working for direct association
- Rescue courses additionally require an open edge with height clearance



**Leading Edge**  
Unit 6  
Glenmore Business Park  
Aerodrome Road  
Gosport  
Hampshire  
PO13 0FQ

**Telephone**  
+44 (0) 1329 550 121  
**Fax**  
+44 (0) 1329 550 470  
**Web**  
[www.leadingedgesafety.co.uk](http://www.leadingedgesafety.co.uk)  
**Email**  
[sales@leadingedgesafety.co.uk](mailto:sales@leadingedgesafety.co.uk)